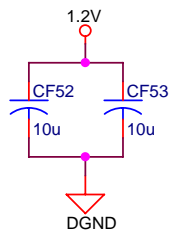
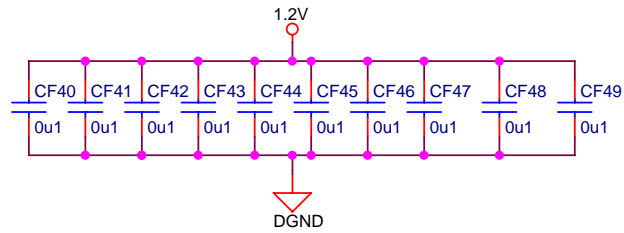
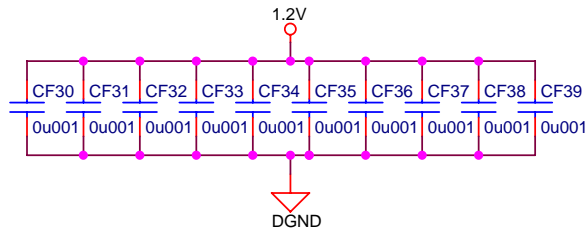
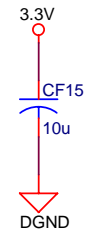
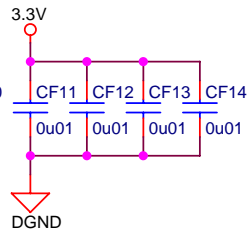
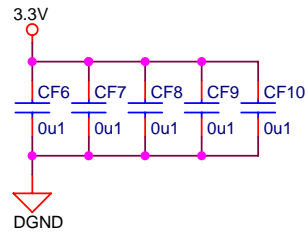
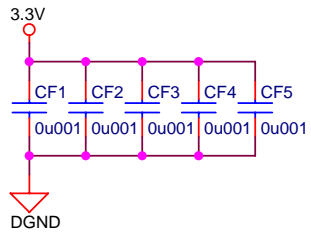
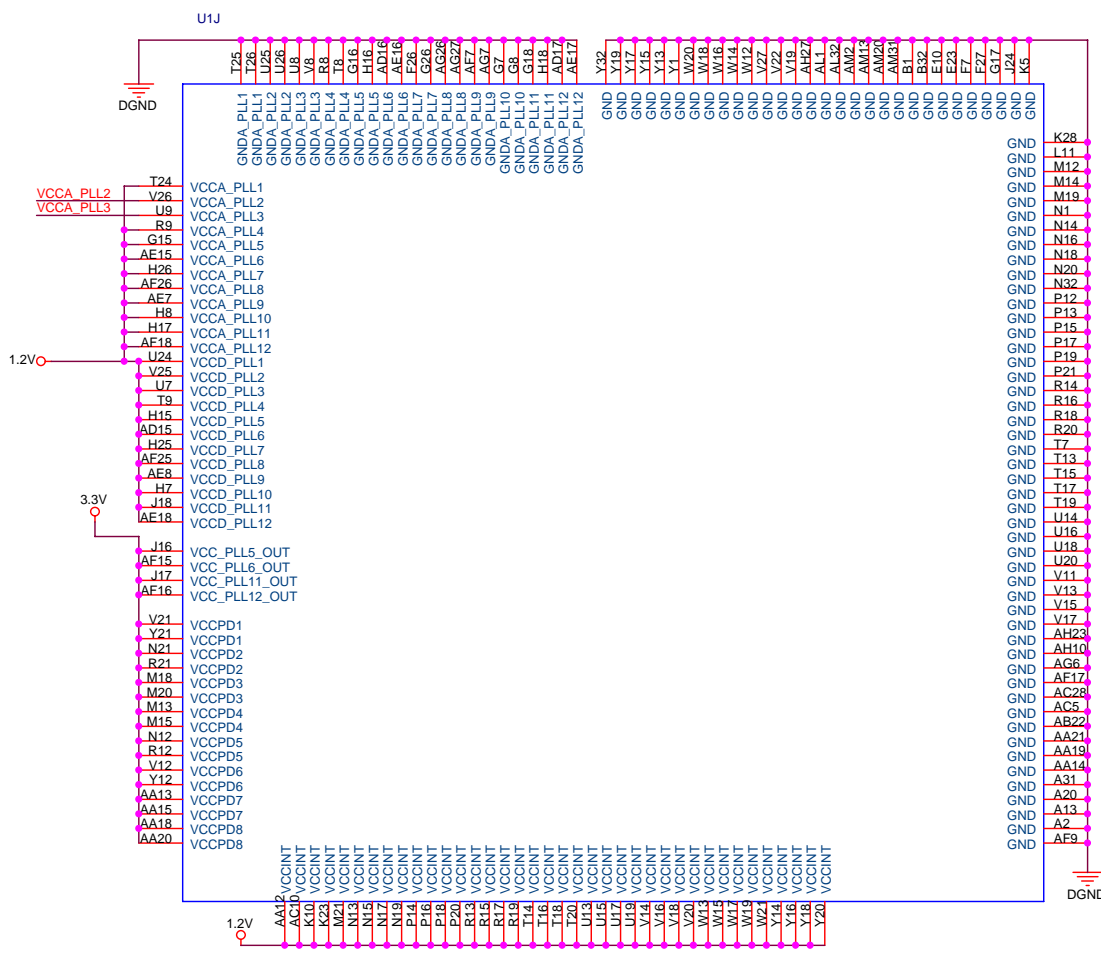


这些器件放在一起，距离FPGA不要太远  
如果采用扩展板的CPLD来配置FPGA，RC9和RC10应换成4.7K电阻

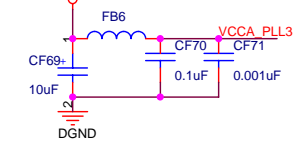
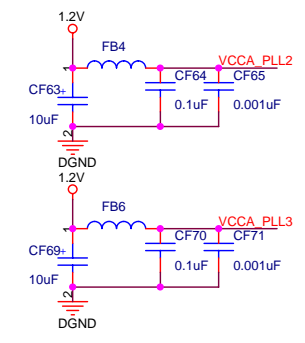
Title		
EP2S60/90/130/180 KIT BAORD BUAA		
Size	Document Number	Rev
A4	FPGA CONFIG	1.0
Date:	Friday, May 16, 2008	Sheet 1 of 13



Title		
EP2S60/90/130/180 KIT BAORD BUAA		
Size	Document Number	Rev
A4	FPGA BYPASS	1.0
Date:	Friday, May 16, 2008	Sheet 1 of 13

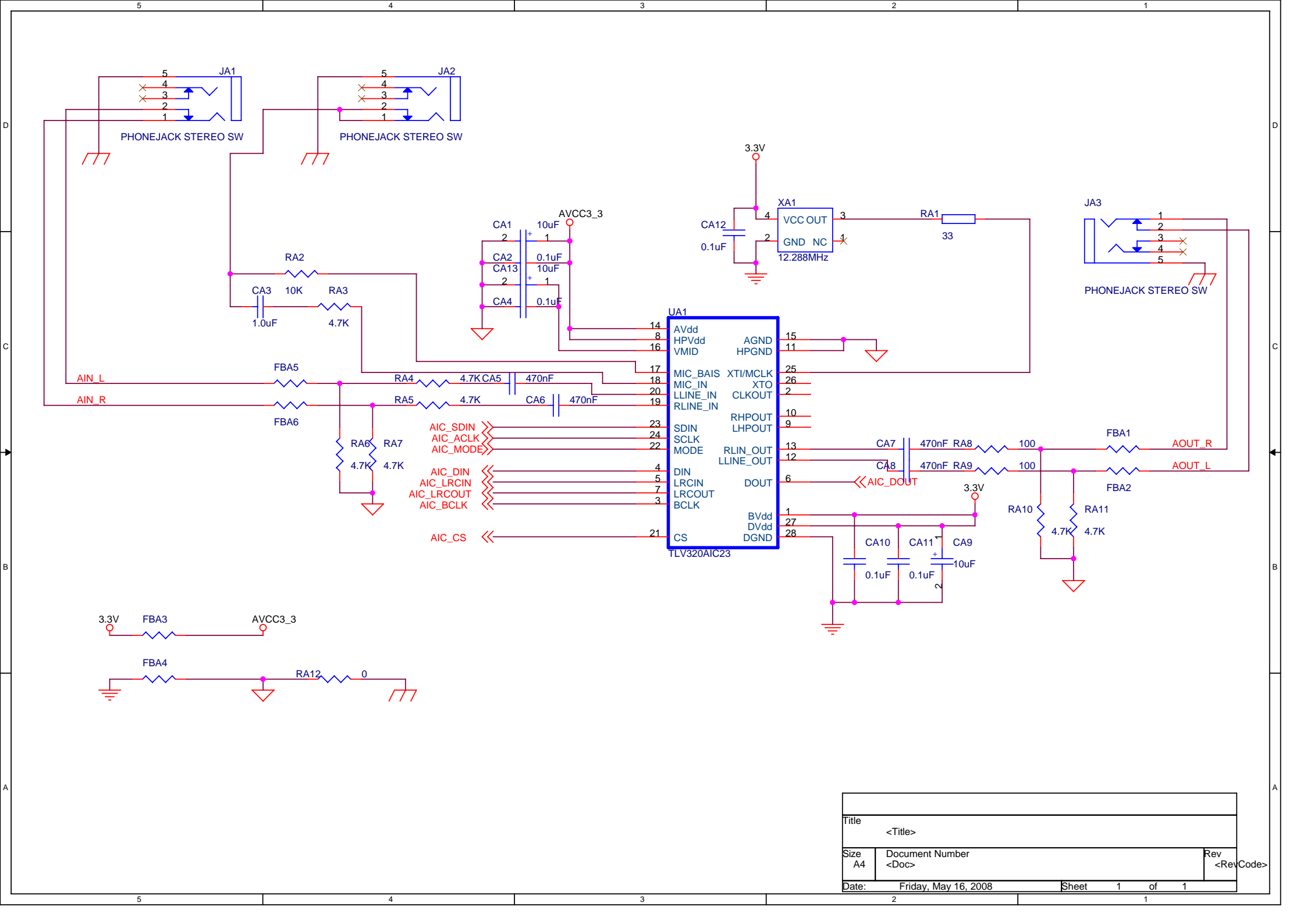


EP2S60F1020C5

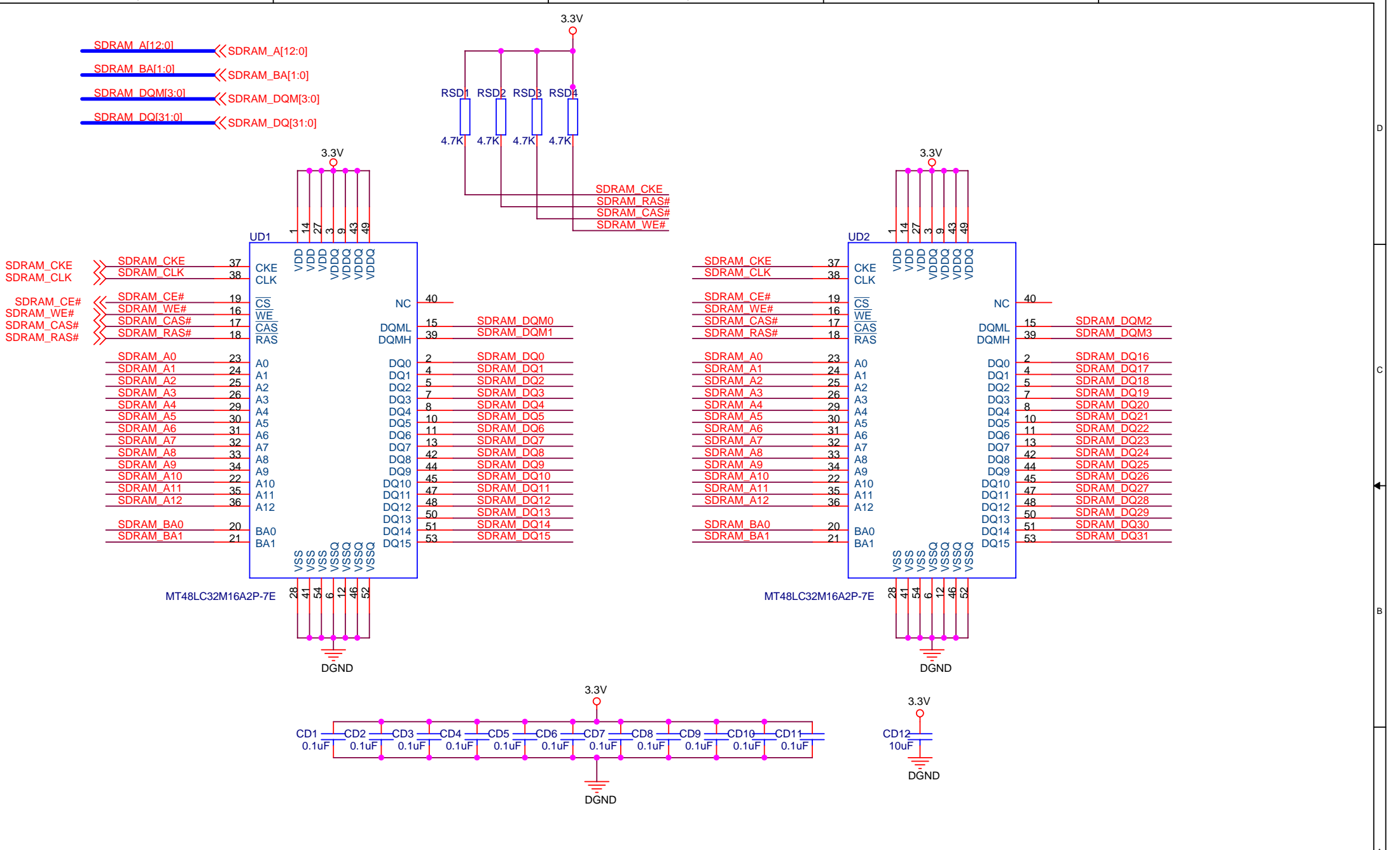


U1K		
AC29	NC	G14
AC30	NC	G27
AD3	NC	G28
AD4	NC	H4
AD29	NC	H3
AD30	NC	AG25
AE5	NC	H6
AE6	NC	H9
AE9	NC	J29
AF5	NC	L27
AF6	NC	J30
AF14	NC	L28
AF27	NC	N11
AF28	NC	P23
AG21	NC	W10
N10	NC	W11
F21	NC	W22
F25	NC	W23
G5	NC	H5
G6	NC	P22

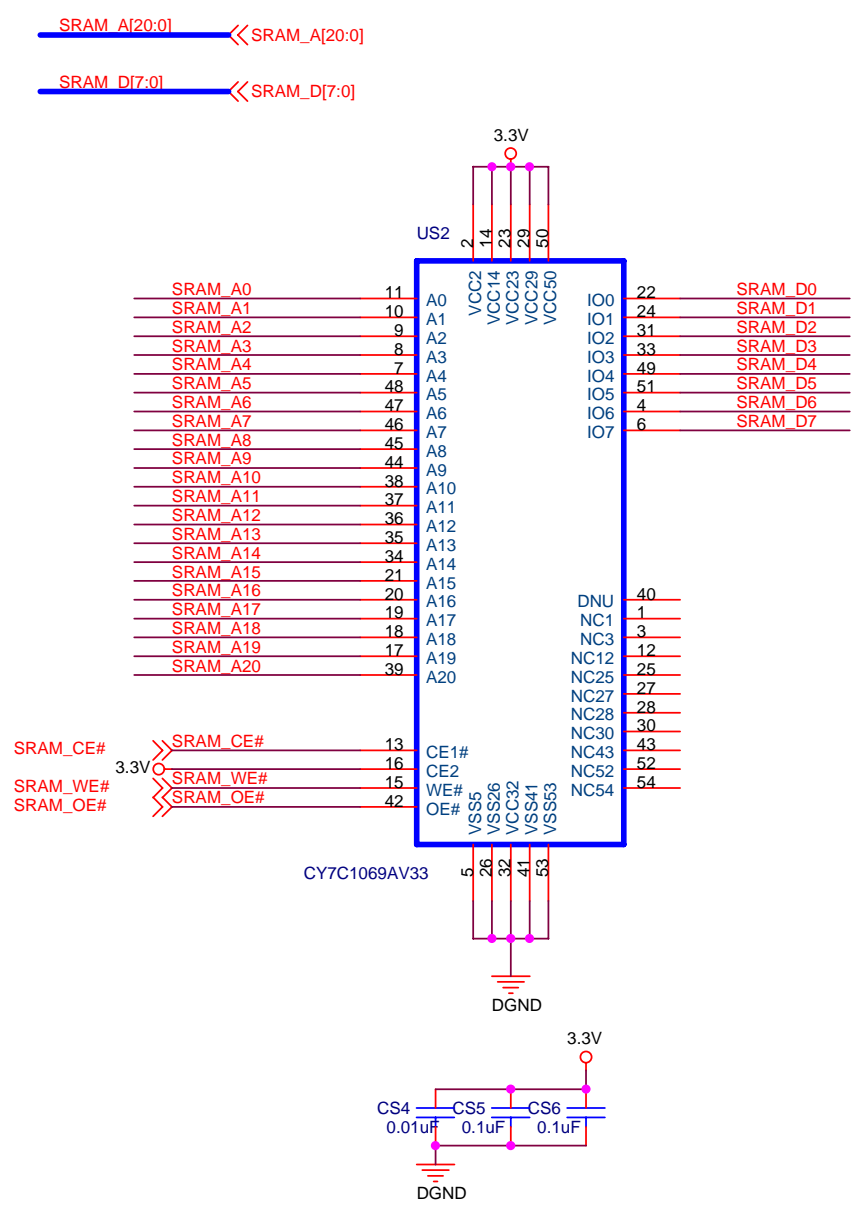
EP2S60F1020C5



Title		
<Title>		
Size	Document Number	Rev
A4	<Doc>	<RevCode>
Date:	Friday, May 16, 2008	Sheet 1 of 1

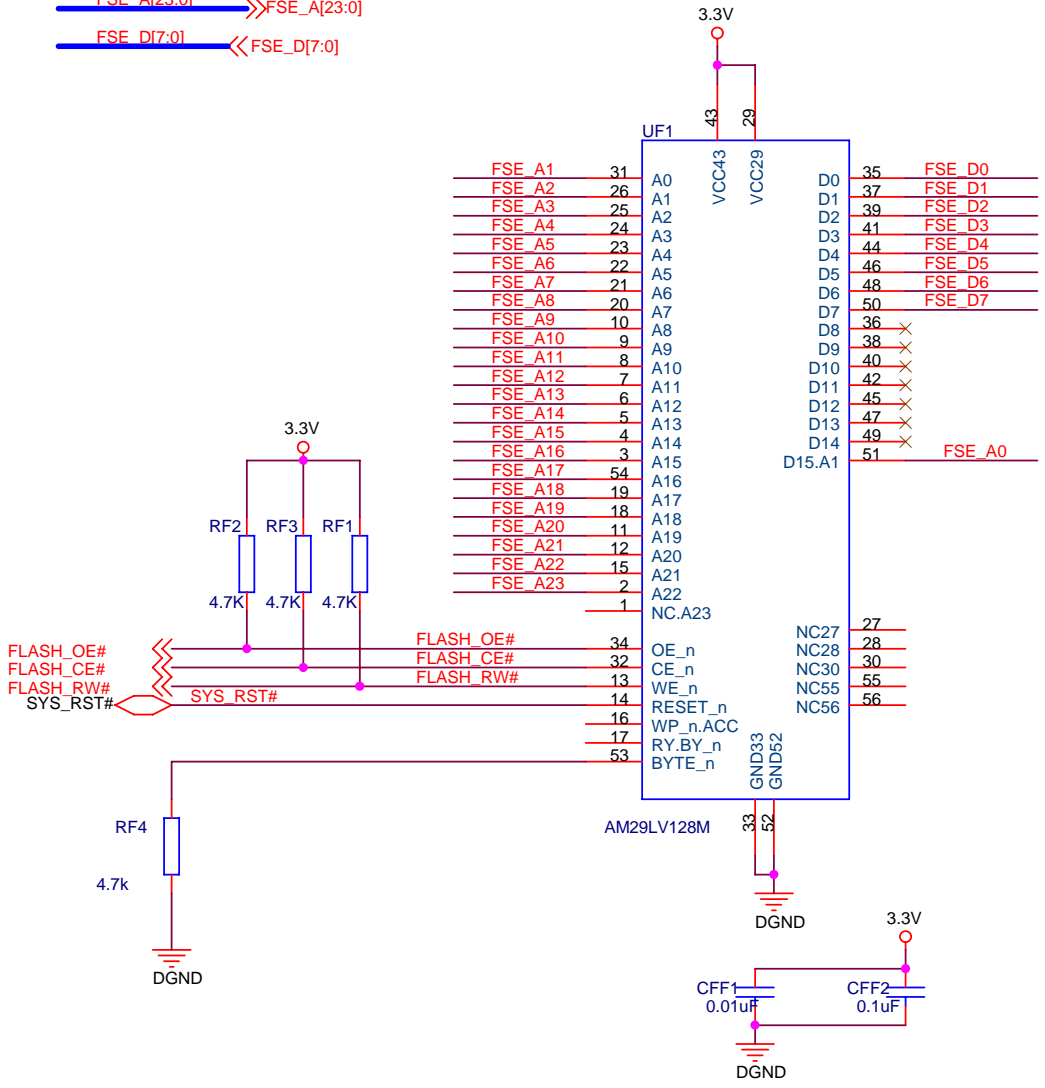


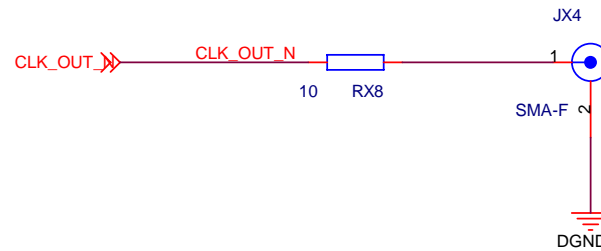
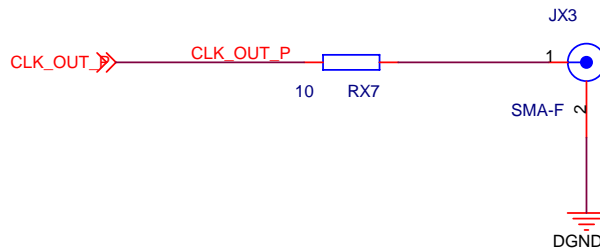
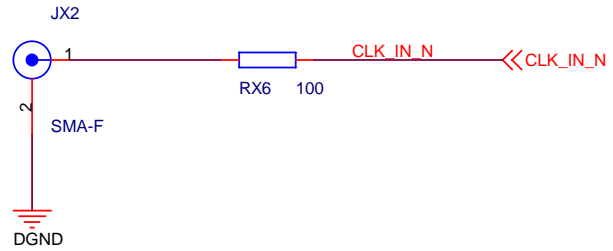
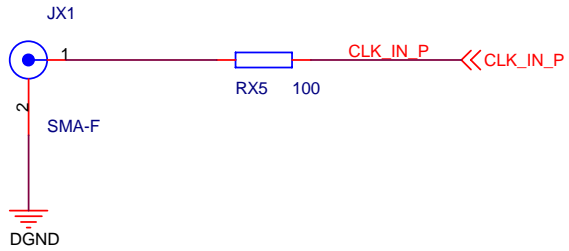
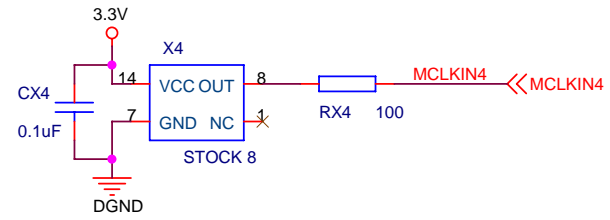
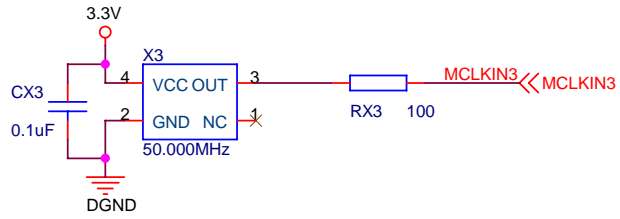
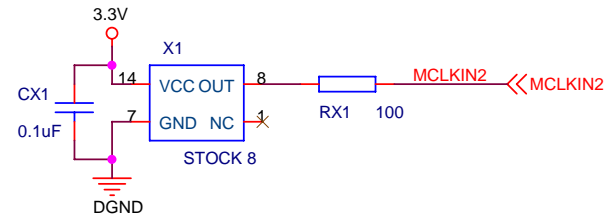
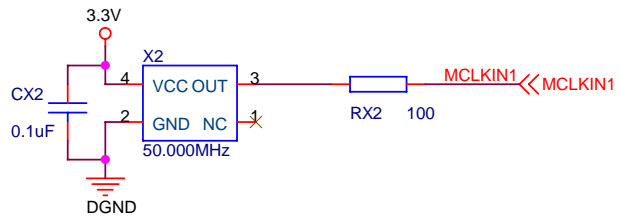
Title		
EP2S60/90/130/180 KIT BAORD BUAA		
Size	Document Number	Rev
A4	SDRAMX2	1.0
Date:	Friday, May 16, 2008	Sheet 2 of 13



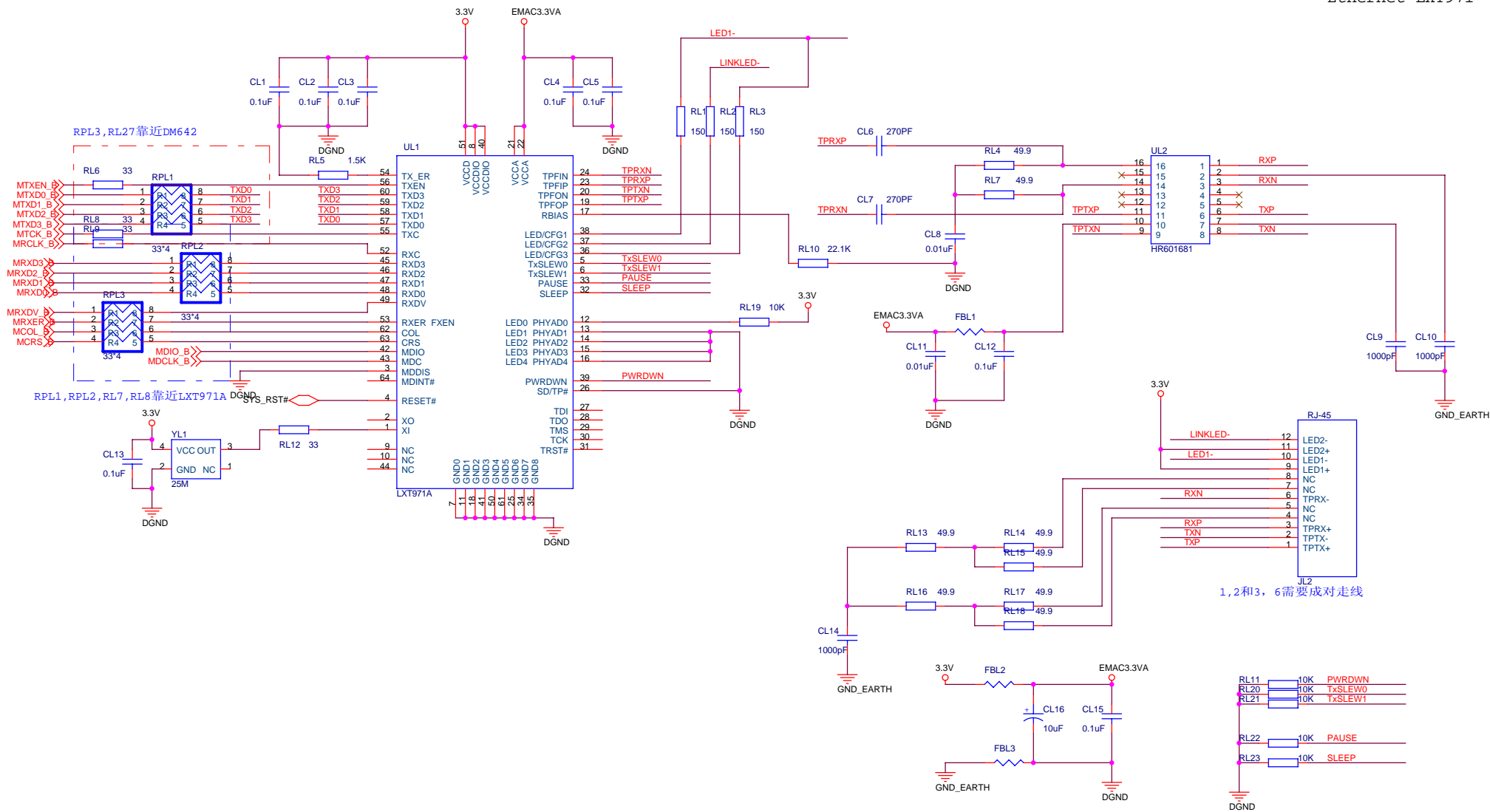
Title		
EP2S60/90/130/180 KIT BAORD BUAA		
Size A4	Document Number <b>SRAMX2</b>	Rev 1.0
Date:	Friday, May 16, 2008	Sheet 3 of 13

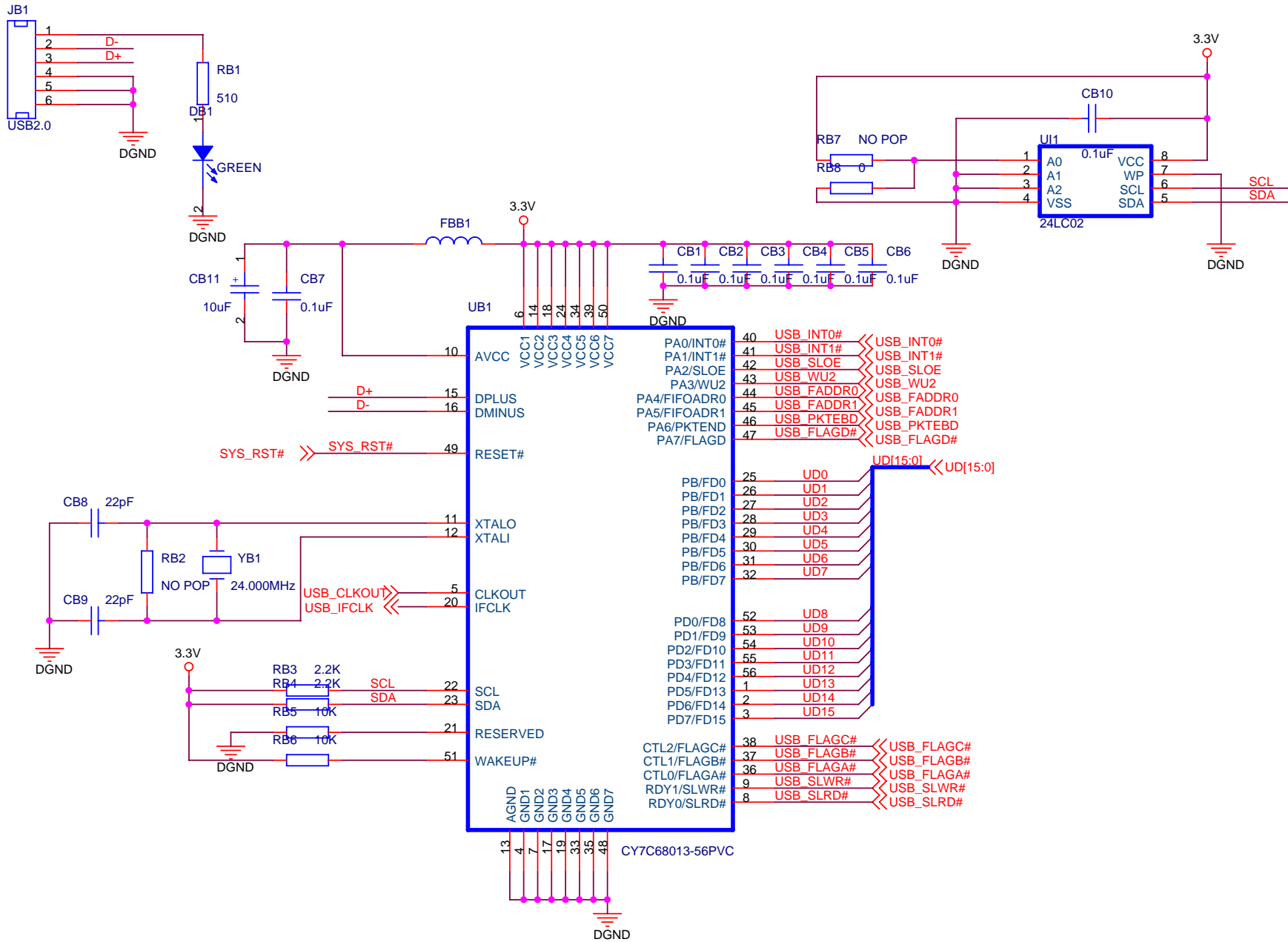
FSE\_A[23:0] >> FSE\_A[23:0]  
 FSE\_D[7:0] << FSE\_D[7:0]



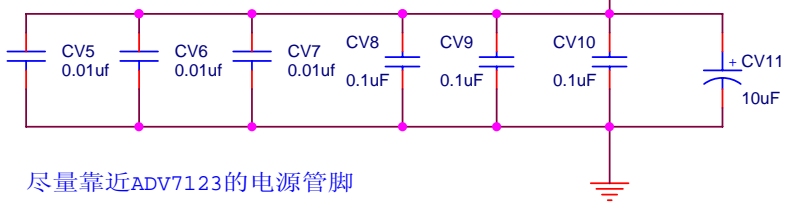
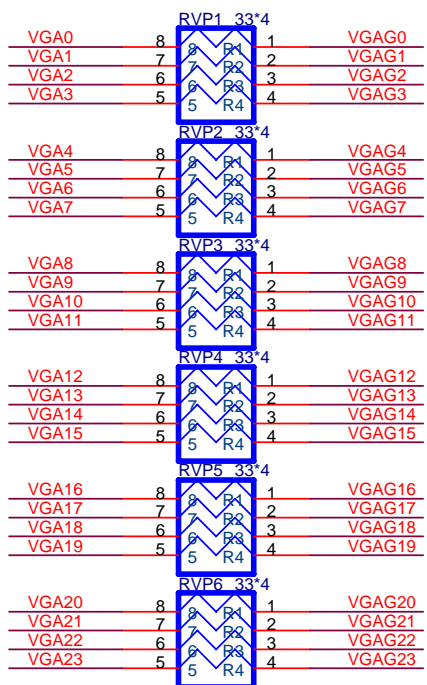
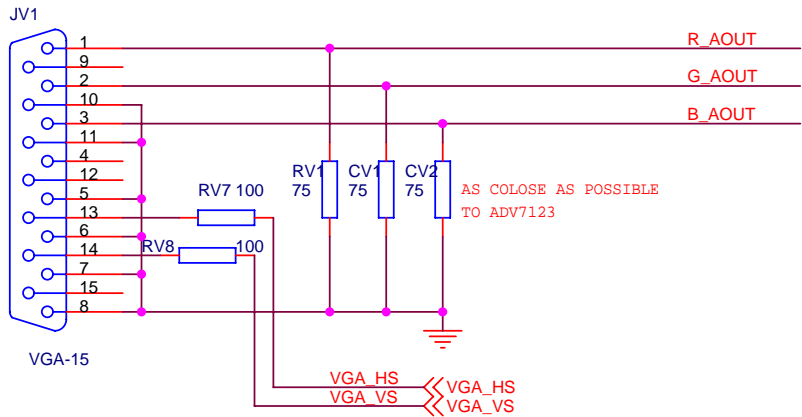


Title		
EP2S60/90/130/180 KIT BAORD BUAA		
Size	Document Number	Rev
A4	CLOCK	1.0
Date:	Friday, May 16, 2008	Sheet 5 of 13

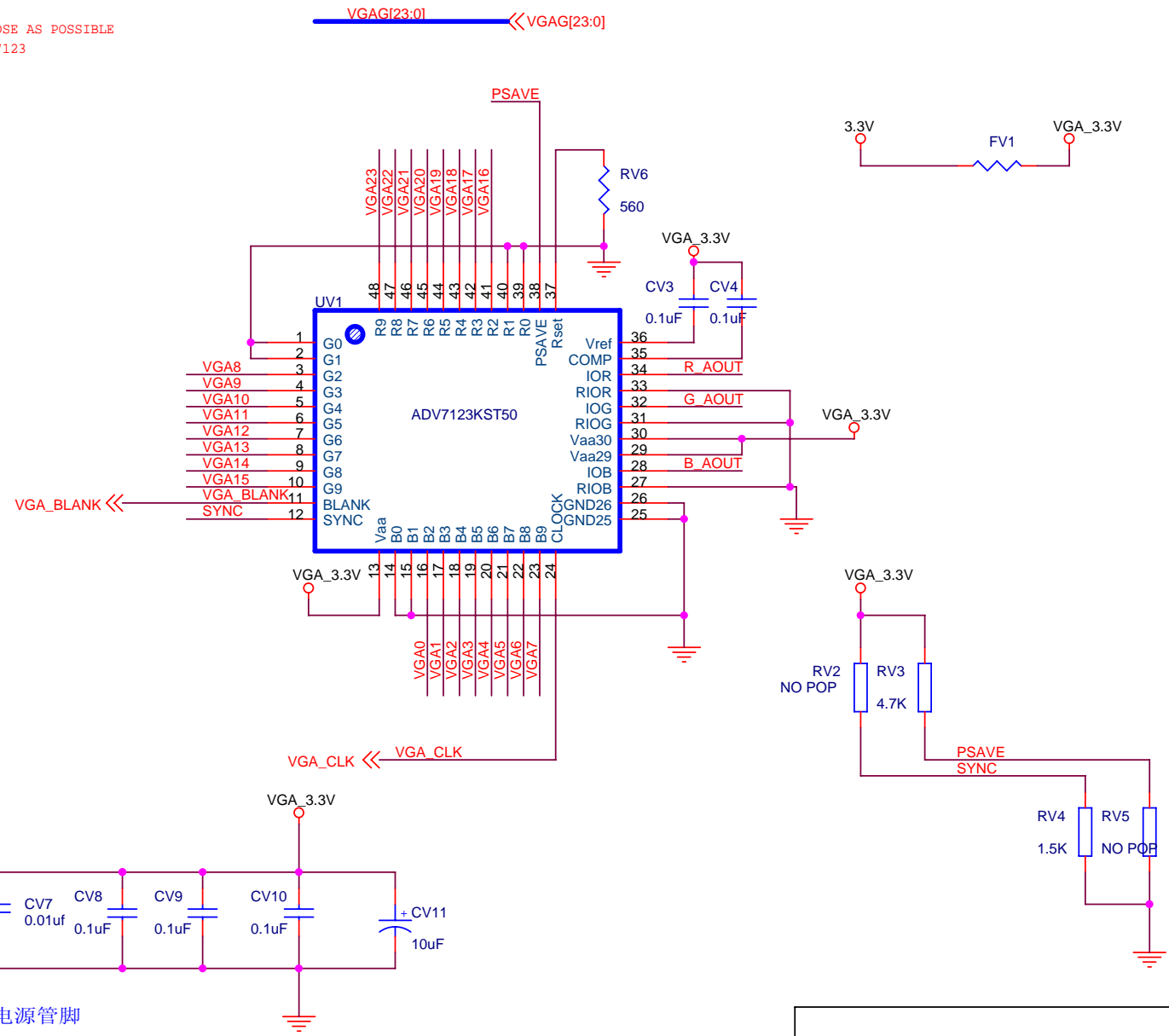




Title EP2S60/90/130/180 KIT BAORD BUAA		
Size A4	Document Number USB_HOST	Rev 1.0
Date: Friday, May 16, 2008	Sheet 8	of 13

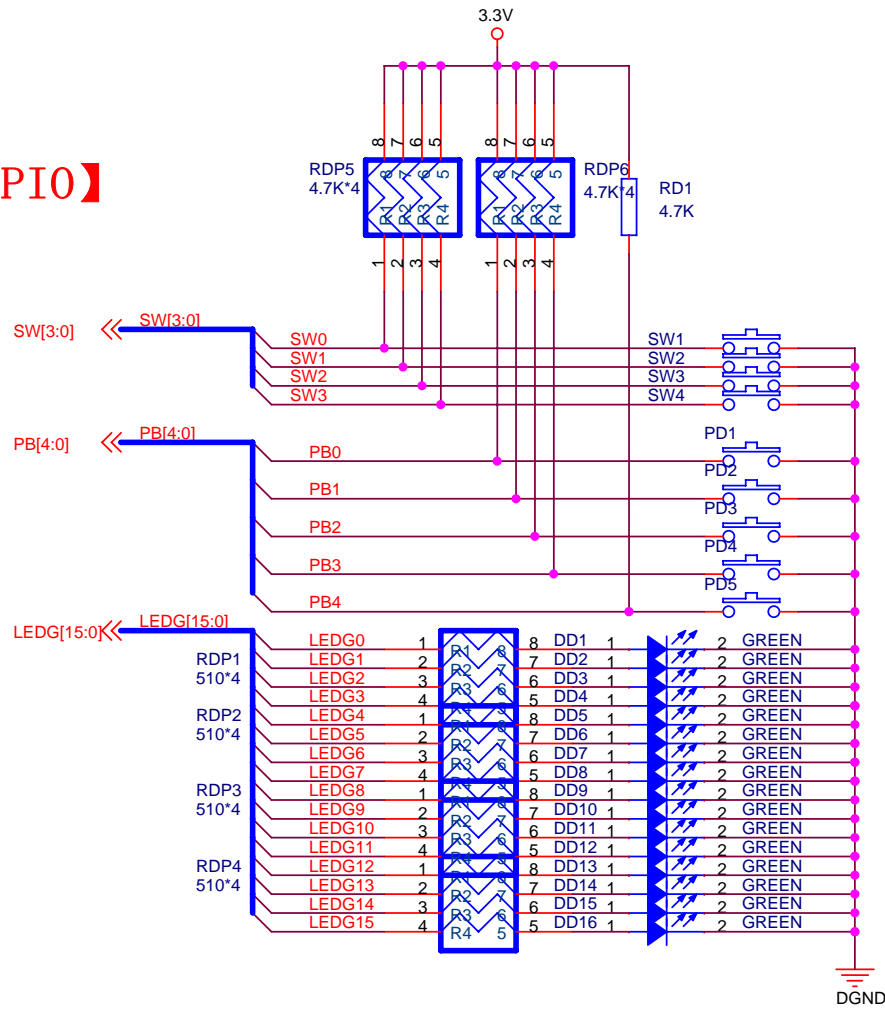


尽量靠近ADV7123的电源管脚

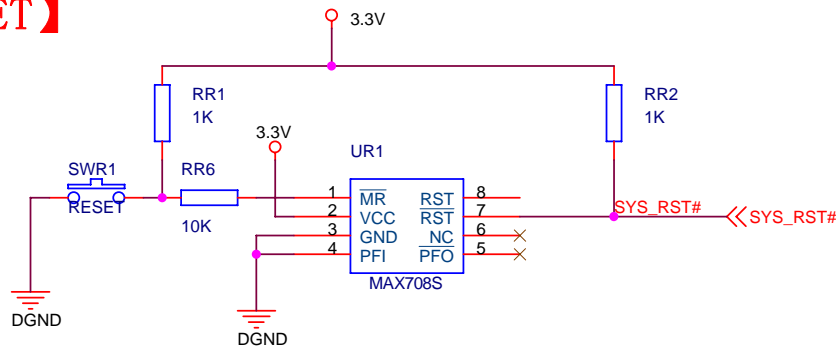


Title		
EP2S60/90/130/180 KIT BAORD BUAA		
Size	Document Number	Rev
A4	VGA OUTPUT	1.0
Date:	Friday, May 16, 2008	Sheet 9 of 13

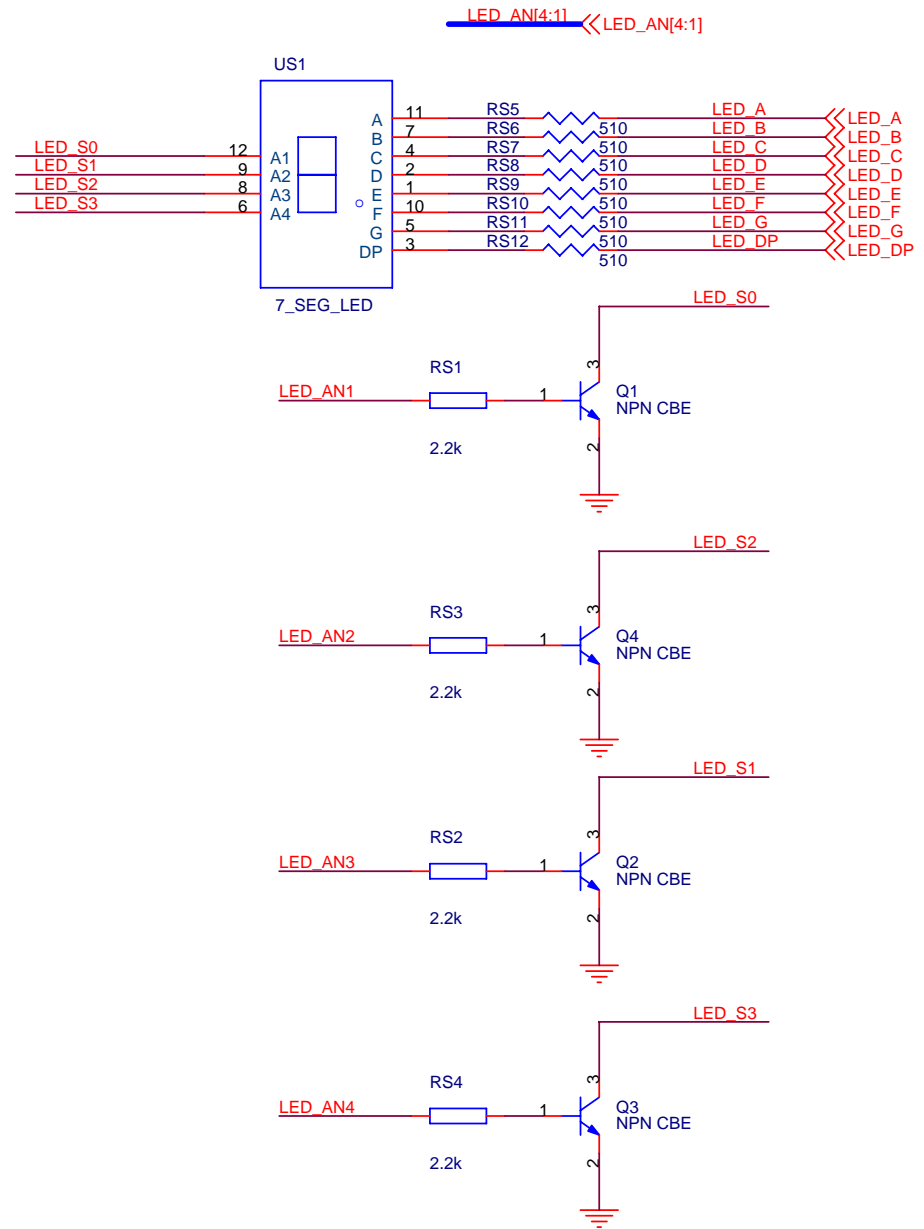
# 【PIO】



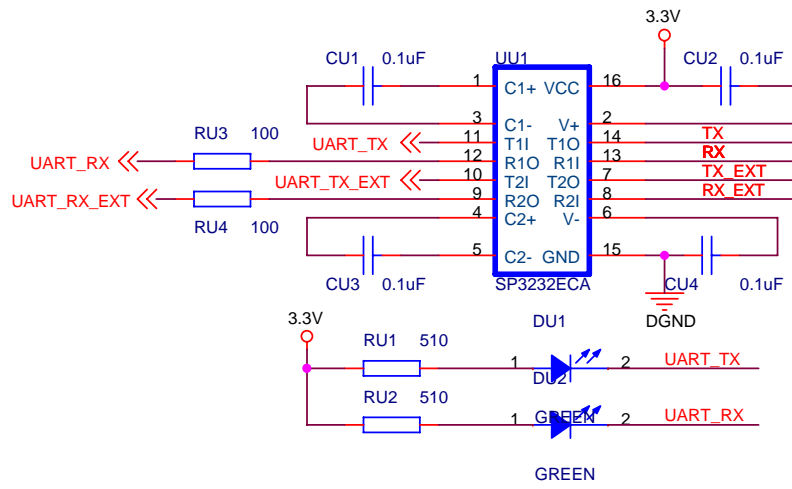
# 【RESET】



放在显著位置

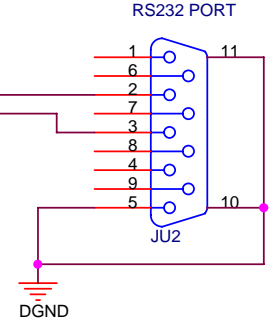


Title EP2S60/90/130/180 KIT BAORD BUAA		
Size A4	Document Number I2C&RESET&PIO	Rev 1.0
Date: Friday, May 16, 2008	Sheet 10 of 13	

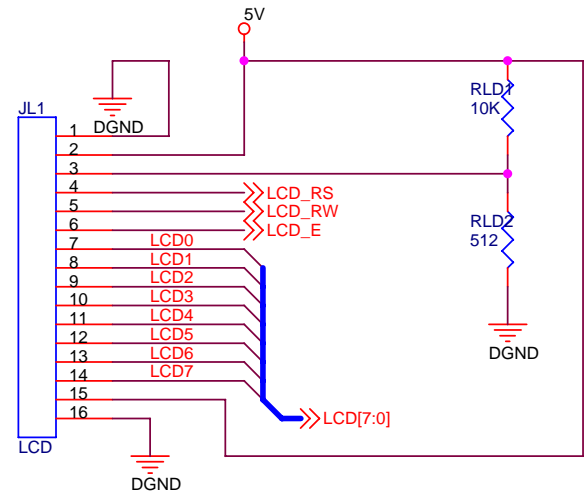


FEMALE  
使用直通线和PC机连接

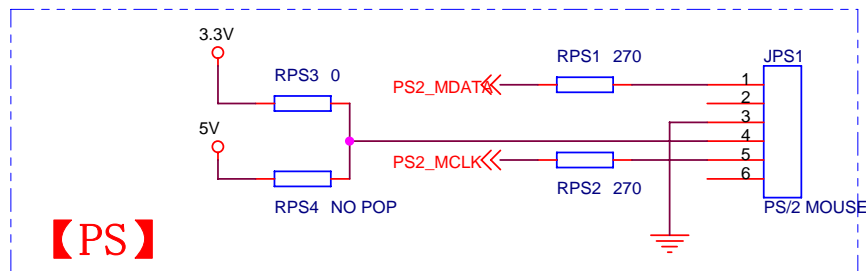
**【RS-232】**



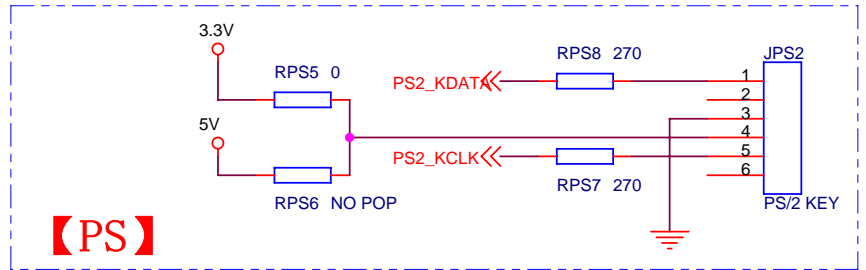
FEMALE  
使用直通线和PC机连接



**【LCD 16207】**

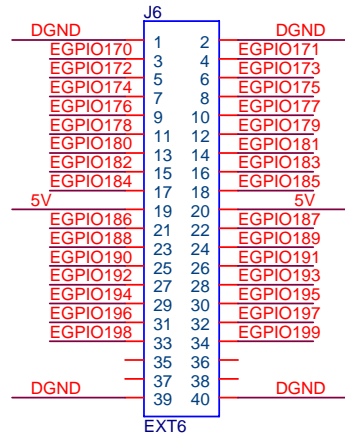
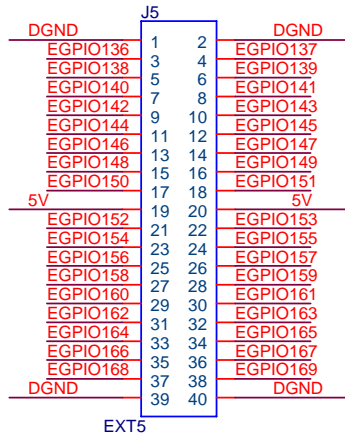
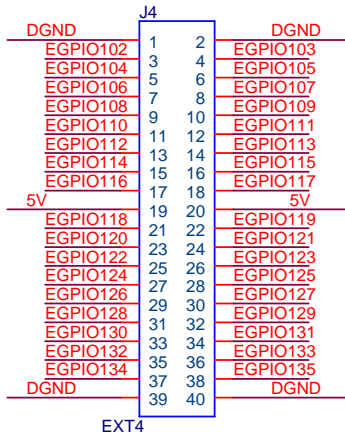
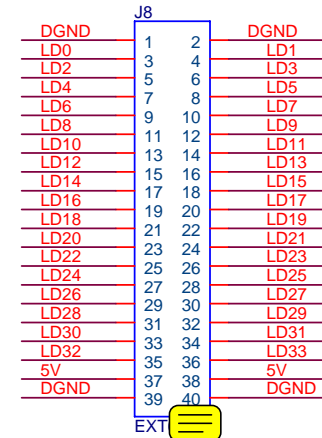
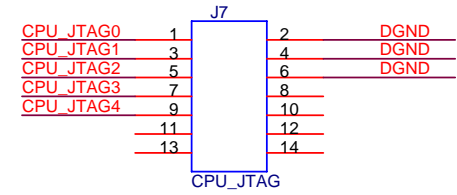
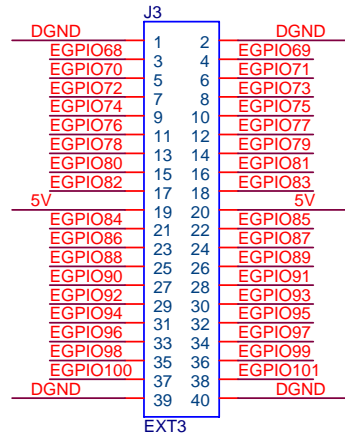
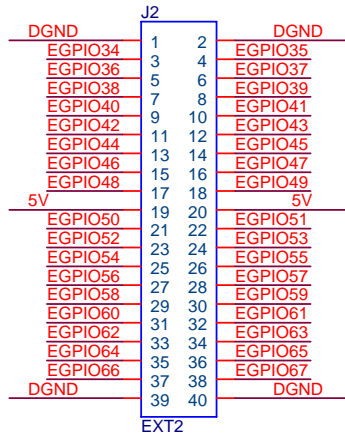
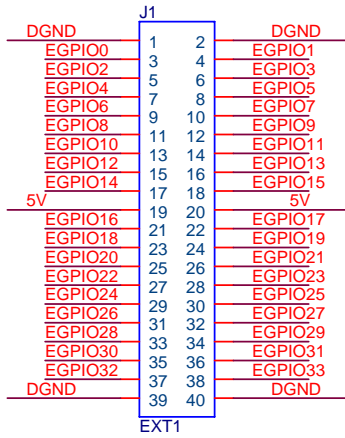
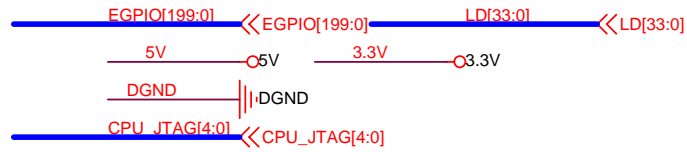


**【PS】**

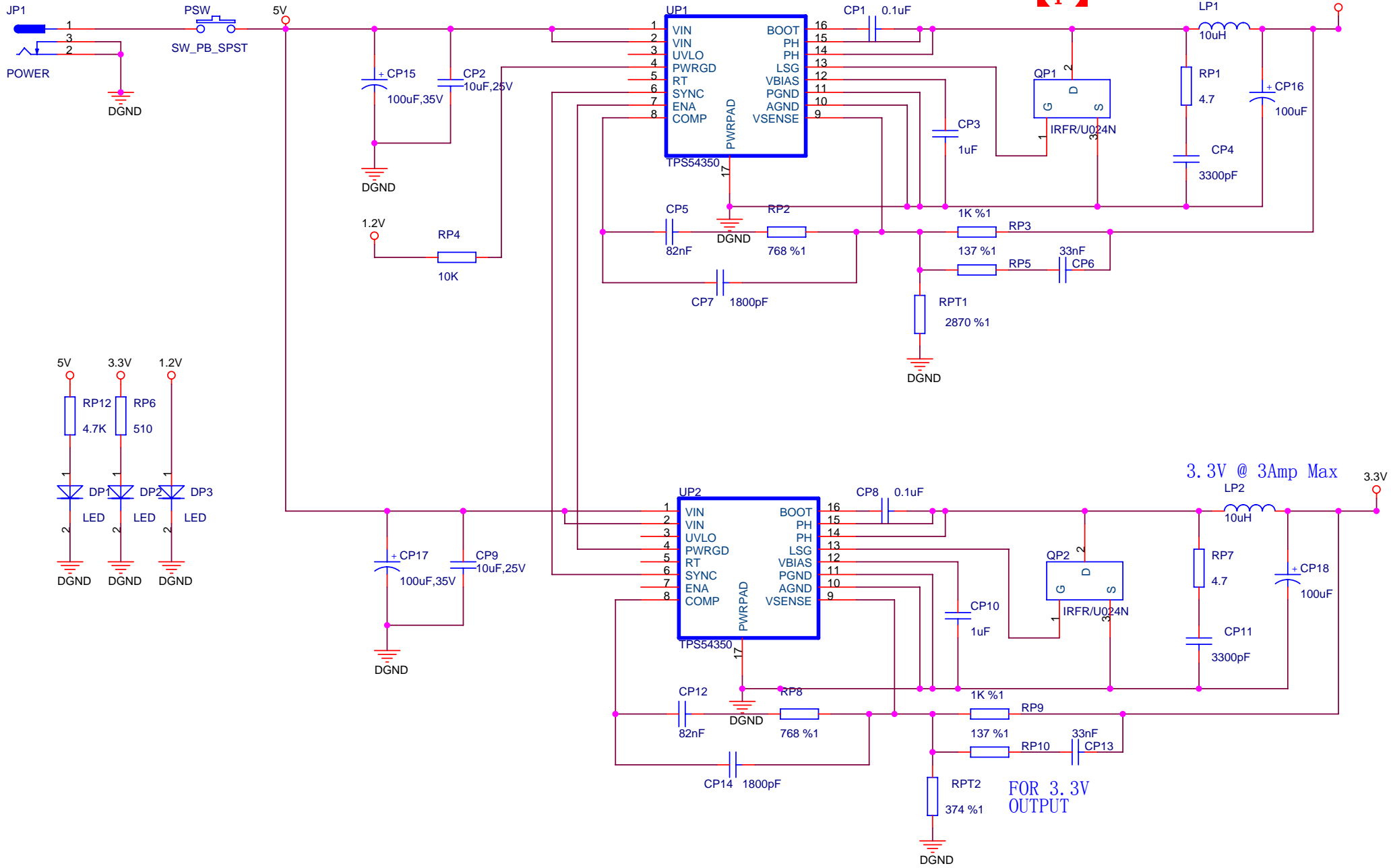


**【PS】**

Title EP2S60/90/130/180 KIT BAORD BUAA		
Size A4	Document Number RS-232&LCD	Rev 1.0
Date: Friday, May 16, 2008	Sheet 11	of 13



Title		
EP2S60/90/130/180 KIT BAORD BUAA		
Size	Document Number	Rev
A4	EXT PORT	1.0
Date:	Friday, May 16, 2008	Sheet 12 of 13



**(P)** 1.2V @ 3Amp Max 1.2V

3.3V @ 3Amp Max 3.3V

FOR 3.3V OUTPUT

Title EP2S60/90/130/180 KIT BAORD BUAA		
Size A4	Document Number SYS POWER	Rev 1.0
Date: Friday, May 16, 2008	Sheet 13	of 13